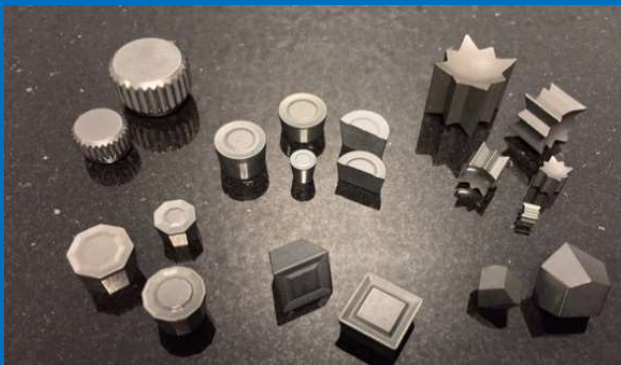




Tungsten Carbide Products for the Drilling Industry



12900 Preston Road, Suite 620
Dallas, Texas U.S.A. 75230
(281) 734-1746 • (281) 734-1839
www.ameriservsupply.com



Our Story

For nearly 30 years, the professionals at AmeriServ Supply have been providing quality products and memorable customer experiences. And now, they proudly offer the Synergy Carbide™ brand of hardfacing and drilling products for the energy industry.



Available exclusively through AmeriServ Supply, the broad offering includes engineered inserts, like the original Starbide™ and the patented Pentacut™, which have become the standards for increased productivity through lower failure rates and maximum uptime, as well as all the industry-recognized shapes. CrushCut™ crushed carbide composite rods and grit are available in a range of sizes, along with flux and tinning rod for your welding applications. And a selection of gage and wear protection compacts, stabilizers, and tiles rounds out the offering.

At Your Service

More than just another carbide distributor. AmeriServ Supply sources its materials from a host of domestic and global manufacturers, ensuring the most economical, highest quality products available.

We are committed to providing exceptional customer care. Our friendly and experienced team is available 24/7 for service and technical support. Whether it's product selection, process optimization, or troubleshooting, our decades of manufacturing expertise and industry knowledge are at your service.

Recycling Has Never Been Easier

Our sustainability initiative allows our customers to become part of the effort by recycling scrap tungsten carbide materials. Our sister company, Tungsten Carbide Recycling, arranges freight, sorts and weighs your material, and provides detailed settlement reports along with prompt payment.

It couldn't be easier to do your part to preserve and protect our environment. Visit www.tungstencarbiderecycling.com for more information.



HARDFACING PRODUCTS cutting inserts	Part Number	Dimensions (inches)			Model
		Diameter / Width	Thick. / Height	Length	
The Original Starbide™	STARBIDE316	3/16	3/16	-	
	STARBIDE14	1/4	1/4	-	
	STARBIDE516	5/16	5/16	-	
	STARBIDE38	3/8	3/8	-	
	STARBIDE12	1/2	1/2	-	
Patented Pentacut™	PENTACUT3/8	3/8	3/8	-	
Round	RCUR1.83	3/16	3/16	-	
	RCUR2.93	3/8	3/16	-	
	RCUR34	3/8	1/4	-	
Half Round	RCUR1.47	3/8	3/16	3/16	
	RCUR1.55	3/8	1/4	3/16	
8-Sided	OCUR230	1/4	3/16	-	
	OCUR340	3/8	1/4	-	
Half 8-Sided	OCUR340HALF	3/8	1/4	3/16	
12-Sided	M17466	3/8	1/4	-	
Square	D0006	3/8	3/16	-	
	SDUR2.940	3/8	1/4	-	
	M17802	3/8	1/4	-	
	M17831-1	3/8	1/4	-	
Half Square	D0006HALF	3/8	3/16	3/16	
Rectangle	M17801	3/8	1/4	1/2	
	M17831	3/8	1/4	1/2	

Only AmeriServ supplies original **Starbide™** inserts, which have 14 identical cutting edges with an aggressive geometry for maximum material removal in the shortest possible time.

Our patented **Pentacut™** inserts are uniquely designed to maintain a consistent gage height no matter how they are applied.

Synergy Carbide's engineered fishing and hardfacing products for dressing downhole tools are used to cut through steel casing and plugs and remove downhole junk. A variety of square, round, half-round, and polygonal inserts are available from stock, and application-specific insert geometries can be developed by our experienced engineering team to meet any requirement.

Our engineered products have advantages over traditional crushed carbide in downhole applications. The uniform shapes and sizes of our inserts, which are made from specially-formulated impact and wear-resistant cutting grades, ensure quick and easy application to the tool and reliable performance down the hole where it counts.

HARDFACING PRODUCTS
composite rod for cutting and wear applications

CrushCut™ Rod



Part Number	Particle Size (in.)
CCROD70-1018M	10-18 MESH
CCROD70-18116	1/8 X 1/16
CCROD70-31618	3/16 X 1/8
CCROD70-316316	3/16 X 3/16
CCROD65-14316	1/4 X 3/16
CCROD65-1414	1/4 X 1/4
CCROD65-51614	5/16 X 1/4
CCROD65-38516	3/8 x 5/16
CCROD65-1238	1/2 x 3/8

CrushCut™ composite rod is cast in a nickel / silver matrix with a tensile strength of up to 100,000 PSI and is offered without flux in one-pound increments.

A 65/35 ratio of carbide to matrix is used for cutting applications, and for wear applications a 70/30 ratio is used.

HARDFACING PRODUCTS
crushed carbide grit for cutting and wear applications

CrushCut™ Grit



Part Number	Particle Size (in.)
CC10-18	10-18 MESH
CC18-116	1/8 X 1/16
CC316-18	3/16 X 1/8
CC316-316	3/16 X 3/16
CC14-316	1/4 X 3/16
CC14-14	1/4 X 1/4
CC516-14	5/16 X 1/4
CC38-516	3/8 x 5/16
CC12-38	1/2 x 3/8

CrushCut™ premium grit is available in industry-standard sizes from 1018 mesh through 3/8". Sintered virgin tungsten carbide material is crushed and screened to ensure unmatched consistency.

FLUX

High-temperature flux for nickel-silver alloys (RBCuZn)

Part Number	Form	Weight (lbs.)
43860	Powder	1
43001	Paste	1

AmeriServ offers Type B high-temperature flux, in powder and paste forms, tailored for use with nickel-silver alloys. Non-corrosive, washes away with water, and cleans contaminants on the brazing surface.

TINNING ROD

Nickel-silver alloy for composite rod



Part Number	Flux	Dia. (in.)	Length (in.)
TROD1/8		1/8	36
TROD1/8C	✓	1/8	36
TROD3/16		3/16	36
TROD3/16C	✓	3/16	36

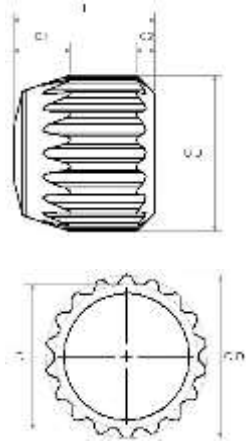
Our tinning rod comes bare or fluxed in standard sizes. Made from the same durable nickel-silver alloy used on all our composite rod products, from AWS and ASME class RBCuZn-D.

Gage and Wear Protection Compacts and Stabilizers

All gage and wear protection compacts and serrated stabilizer inserts are produced in our standard grade, SC1010, which exhibits a good balance of the wear resistance and toughness essential for reducing wear on friction-heavy gage surfaces of rotary cone and diamond bits. Rectangular stabilizers and round wear protection inserts are available from inventory in our standard grade, SC1012, specially formulated to enhance wear characteristics.

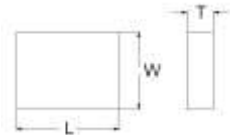
WEAR INSERTS

Serrated stabilizers



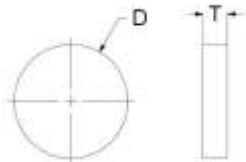
Part Number	Dimensions (inches)					Model
	O.D.	I.D.	C1	C2	Length (L)	
M17745	.273	.242	.100	.031	1/4	
M17683	.334	.309	.059	.015	.145	
M17504	.334	.309	.059	.015	.200	
M17457	.334	.309	.059	.015	.268	
M10025	.406	.374	.125	.031	1/4	
M17697	.406	.374	.125	.023	.305	
M10040	.406	.374	.103	.031	5/16	
M10020	.406	.374	.125	.031	3/8	
M17519	.458	.418	.137	.015	1/4	
M17642	.458	.418	.137	.015	.348	
M17649	.458	.418	.137	.015	7/16	
M17420	.458	.418	.137	.015	.475	
M17580	.583	.551	.140	.015	1/4	
M17623	.583	.551	.140	.015	5/16	
M10038	.583	.551	.139	.015	3/8	
M10010	.583	.551	.139	.015	1/2	
SDS406438	.406	.374	.125	.122	7/16	
SDS583625	.583	.551	.139	.175	5/8	

Rectangular stabilizers



Part Number	Length (L)	Width (W)	Thickness (T)	Model
TILE6.5X5X2	6.5 mm	5 mm	2 mm	
TILE13X5X2	13 mm	5 mm	2 mm	
TILE6.5X5X3	6.5 mm	5 mm	3 mm	
TILE13X5X3	13 mm	5 mm	3 mm	
TILE13X5X3.2	13 mm	5 mm	3.2 mm	
TILE13X5X4	13 mm	5 mm	4 mm	

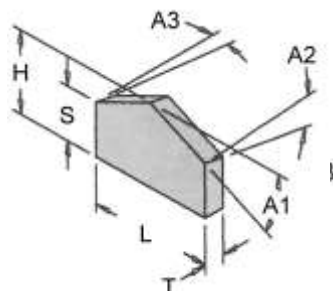
Round wear protection inserts



Part Number	Diameter (D)	Thickness (T)	Model
DISC240X200	.240	.200	
M17632	.245	.125	
DISC245X133	.245	.133	
DISC245X200	.245	.200	
DISC370X080	.370	.080	
DISC370X133	.370	.133	
DISC370X200	.370	.200	
DISC370X311	.370	.311	
M17804	.375	.125	
M17805	.375	.188	
M17806	.375	.250	
M17510	.375	.305	

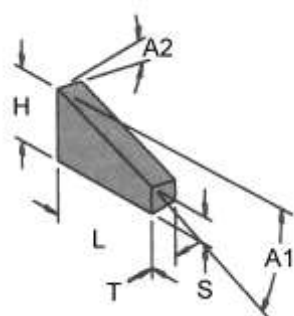
The components for a geophysical / drag bit are determined by the bit manufacturer. Unless otherwise specified, all inserts are produced in our standard grade, SC1010, which exhibits a good balance of the wear resistance and toughness essential in cutting softer rocks, sands and clays. This grade also performs well with the shearing action of the bit. All geophysical / drag bits inserts have a 45° degree chamfer at the base of the non-cutting side to facilitate brazing, unless the part number is italicized. All inserts are finished using our proprietary surface-treatment process for enhanced brazeability.

Symmetrical apex



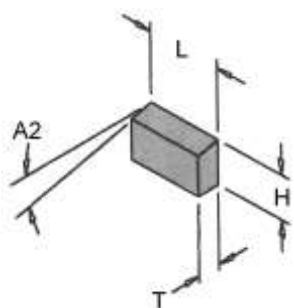
Part Number	Dimensions (inches)						
	Main Form				Angles		
	Length (L)	H	Thick (T)	S	A1	A2	A3
ANC386	1.000	.775	.188	.500	25°	10°	7°
ANC467	1.125	.625	.250	.420	20°	10°	3°
ANC466	1.125	.750	.250	.545	20°	10°	3°
ANC465	1.125	.938	.250	.733	20°	10°	3°

Wing – left hand



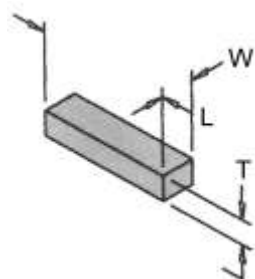
Part Number	Dimensions (inches)						
	Main Form				Angles		
	Length (L)	H	Thick (T)	S	A1	A2	A3
<i>ANC777</i>	.900	.775	.250	.450	20°	0°	0°

Gage blank – with angle



Part Number	Dimensions (inches)			
	Main Form			Angles
	Length (L)	Height (H)	Thick (T)	A2
<i>ANC238</i>	.625	.375	.188	12°

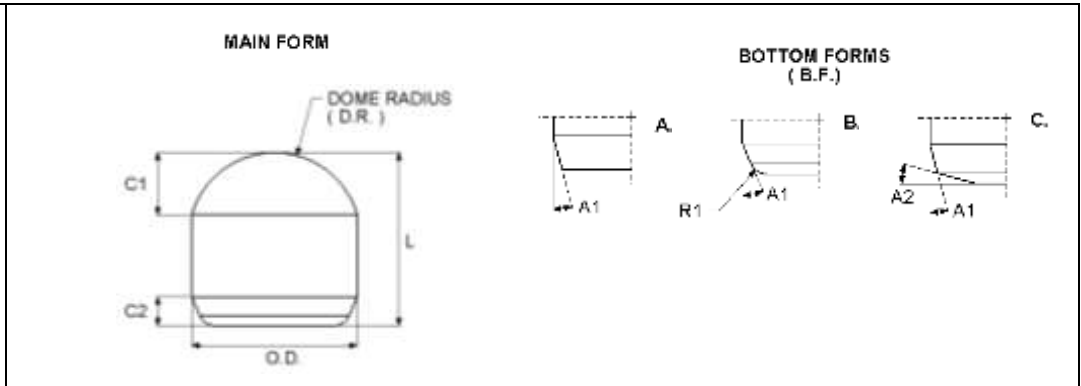
Gage blank – no angle



Part Number	Dimensions (inches)		
	Length (L)	Width (W)	Thick (T)
<i>ANC480</i>	1.000	.250	.125
<i>ANC481</i>	1.000	.250	.188
<i>ANC485</i>	2.250	.143	.195

Gage and wear protection compacts

For use on roller reamers or other downhole tools where domed gage protection is needed



Part Number	Dimensions (inches)								
	Main Form					Bottom Form			
	O.D.	L	C1	C2	D.R.	TYPE	A1	A2	R1
3165RB	.3165	.313	.105	.050	.172	B	15°	-	.020
3195RB	.3190	.313	.108	.054	.172	B	15°	-	.020
3797RB	.3790	.437	.130	.068	.203	B	15°	-	.075
3816RB	.3810	.375	.133	.065	.203	B	15°	-	.020
4418RB	.4410	.500	.160	.089	.234	B	15°	-	.020
4448RB	.4440	.500	.160	.089	.234	B	15°	-	.020
5698RB	.5690	.500	.212	.094	.297	B	15°	-	.040

Our Mission

We have a lifelong respect for the sacrifices our nation's military and first responders make to keep our country safe and free. It is the mission of AmeriServ Supply to support these heroes by donating a portion of our profits to charities benefiting these elite groups.

We take pride in making contributions to organizations like the Wounded Warrior Project, the Fisher House Foundation, and the Gary Sinise Foundation. Every dollar we earn means we're helping improve the lives of these amazing people. We sincerely appreciate you joining us in this effort.

